

The Good News

International Magazine of The Church of God



MASSIVE MOUNT SINAI

JULY 1971



More About Our Cover...

An unusual perspective in our cover photo makes massive Mount Sinai seem smaller than it actually is in comparison to the persons in the foreground. But don't let that fool you — it's 7,482 feet tall! View is looking south from Israel's place of encampment. Beginning on page 11 of this issue, the second article in a two-part series retraces the route of the Exodus and explores some intriguing findings on and around Mount Sinai.

Ambassador College Photo

What our READERS SAY...

"Second Effort"

I'd like to comment on the article "Success Through Second Effort!" It really hit my thoughts because I've been worrying about how I could increase the monthly amount we send in for the Building Fund. We're on such a tight budget and we send in such a small amount I almost felt as if our little bit would do no good whatsoever. After reading the article, I realize that even our little bit will help. And if we save all our change as suggested, we could increase our offering by at least a half more. Thank you for a good article and I hope everyone will try a little "second effort." I have such a wonderful feeling knowing I can give a little more and that every little bit, no matter how small, will help.

Mrs. G. T.,
Klamath Falls, Oregon

I received your letter of April 5 which explained the dire and difficult circumstances in which the Building Fund finds itself. I thank you for writing. I hope that it won't be necessary to stop the building program and especially the House for God. I am going to make a "second effort" as recommended in *The GOOD NEWS* article. Very inspiring article. I will increase my pledge from \$10.00 a month, to \$15.00 a month, plus I am starting a daily piggy bank which I hope will come to about 5 or 10 dollars additional each month. I counted all the pennies I had around and found 49. So I started with those 49 pennies and now I have 84 cents and growing, plus 2 Canadian pennies and one Mexican centavo. I sincerely hope that each and every one of us in God's Church worldwide will send his pennies and nickels and quarters as the article in *The GOOD NEWS* said so we can have about \$1,300,000 extra in a year's time, which I know will help the Building Fund in a fine way. We will hold up your arms as the people of old did Moses'. I know God is going to help all of us do the job which He so lovingly has put on our shoulders. I thank Him for that.

M. R.,
Flushing, New York

Enclosed is a cheque for \$30.24 which we would like to contribute towards the building of the House for God. We, as a children's club, held a bottle drive to collect the money. We want to see the

House for God being built and would like to do our part in helping out.

Junior Activity Club,
Calgary, Alberta

Timely Article

Thank you for the November-December issue of *The GOOD NEWS*. I have been looking forward to receiving it for a long time. Some of the articles were enjoyable to read — one of them hurt. Mr. Carozzo's timely article on spiritual pitfalls was almost like my biography. It really hurt and was sobering. It's going to take more effort than I have been putting forth to receive power from God to overcome. Of myself I seem so helpless.

You mentioned putting one's whole heart into God's Work is the key to overcoming. Enclosed is a check for \$20 as just a small part of my heart — the only part I can mail. This Work of God counts more than any one individual, but thank you for the concern the entire staff and ministry has for every member.

Mrs. L. L.,
Liberal, Kansas

Louis Jubert

The article on Mr. Louis Jubert in the November-December 1970 *GOOD NEWS* was much appreciated. It was a very moving story and amplified again the hard work involved in the building of a congregation of true Christians. It showed how God brings His plans to fruition through human instruments who respond to His call. We are thereby strongly reminded that we cannot be doers by "sitting on our duffs."

Articles such as these, by providing additional knowledge of the worldwide aspects of God's Church, help us to be more specific and meaningful in our prayers for all of God's ministers and the brethren.

Earl W.,
Westerville, Ohio

Correspondence Course

I just received a letter telling me of the new policy concerning the Ambassador Correspondence Course. Because I have completed Lesson 48, I will not be receiving any more lessons under the new policy.

I wish to take this opportunity to thank all the people that had a part in enabling
(Continued on back cover)

The Good News

International magazine of
THE CHURCH OF GOD
ministering to its members
scattered abroad

July 1971

Volume XX

Number 3

Published at Pasadena, California
© 1971 Worldwide Church of God

EDITOR

HERBERT W. ARMSTRONG

EXECUTIVE EDITOR

Garner Ted Armstrong

MANAGING EDITOR

David Jon Hill

SENIOR EDITORS

Roderick C. Meredith

Albert J. Portune

Herman L. Hoeh

Associate Editors

Richard H. Sedliacik

Ronald Kelly

Contributing Editors

David Albert

Dennis G. Luker

David L. Antion

Ernest L. Martin

Dibar K. Apartian

Leslie L. McCullough

Frank Brown

Bill L. McDowell

Alfred E. Carozzo

Raymond F. McNair

C. Wayne Cole

L. Leroy Neff

Raymond C. Cole

Richard F. Plache

William Dankenbring

John E. Portune

Ronald L. Dart

John Robinson

Charles V. Dorothy

Paul S. Royer

Charles F. Hunting

Norman A. Smith

Paul W. Kroll

Dean R. Wilson

Robert L. Kuhn

Clint C. Zimmerman

Lawson C. Briggs, Copy Editor

Tom Haworth, Art Editor

BUSINESS MANAGER

Albert J. Portune

ADDRESS ALL COMMUNICATIONS to the Editor,
P. O. Box 111, Pasadena, California 91109.

Canadian members should address P. O. Box
44, Station A, Vancouver 1, B. C., Canada.

Our members in United Kingdom, Europe, and
Africa should address the Editor, P. O. Box 111,
St. Albans, Herts., England.

South Africa: P. O. Box 1060, Johannesburg,
Transvaal, R. S. A.

Members in Australia and Southeast Asia should
address the Editor, P. O. Box 345, North
Sydney, NSW 2060, Australia.

In the Philippines, P. O. Box 1111, Makati,
Rizal D-708.

BE SURE TO NOTIFY US IMMEDIATELY of any
change in your address. Please include both old
and new address. IMPORTANT!

FAITH

a vital dimension in God's Work

The power of our collective faith in what God is doing in His Work is a vital force that will move more than mountains. God's Church must unite in believing faith to finish the gun lap of His Work!

by Albert J. Portune

JUST how important is the dimension of FAITH in the completing of God's end-time Work on this earth?

We are all aware of the many admonitions in God's Word about *personal faith* — faith in God, faith to be saved, faith to be healed, etc. But how aware are we of the need for the *collective faith* and *confidence* of the Body of Christ in the things Christ is inspiring His Work to do?

If the body of Christ — the Church — lacks the deep abiding confidence and faith in what Christ is doing through His Work in these last days, then God's Work will lack one of the most *vital* strengths needed to get the job done.

Throughout the Bible *collective faith* is proved to be an ABSOLUTE REQUISITE in humans for the accomplishment of God's will through human instruments.

Example of Israel

The ancient nation of Israel — called personally by God to accomplish a purpose here on earth — is a classic example.

When Israel *collectively* believed and had confidence in what God was doing through them, they were blessed, were successful, triumphed over adversity and achieved their objectives.

When they lost faith and confidence in the things God led them to do, when they doubted things were inspired by God, when they stopped believing *strongly* in Him, they failed, were

cursed and did not accomplish their objectives — they went down and *out!*

We are taught to look back at that example — and *warned* not to make the same mistake! “Now all these things happened unto them [Israel] for *examples*: and they are written for our admonition, *upon whom the ends of the world [age] are come*. Wherefore let him that thinketh he standeth *take heed* lest he fall” (I Cor. 10:11-12).

The completing of God's Work in these last days is VITAL to God. The collective faith, confidence and trust in what God is doing is so *crucially* necessary that God let a whole nation of people perish in the wilderness as an example to warn us how important our *united* faith and confidence is!

In verse 5 Paul writes, “But with many of them God was NOT WELL PLEASED. . . .” The basic underlying cause of God's displeasure was their lack of faith and belief that *He* was directing them. Hebrews 11:6 clearly shows why: “But without *faith* it is impossible to please him.”

Brethren, God's Work is entering its most critical phase of this age. God is opening tremendous doors. He is revealing improved systems and methods to accomplish His Work. He is bringing His Work and His apostle into relationships with key people in high places which are so far-reaching in their implications and import as to stagger the imagination!

Divinely guided, everything is falling

into place for the completing of God's Work. Everything — but perhaps that vital dimension of unified faith and confidence in what God is doing.

Brethren, God's Church as a whole needs to collectively and unitedly become CONFIDENT and FILLED WITH FAITH and get *totally behind* what God is doing. Then the fantastic strength of that collective faith will *electrify* the body of Christ and bring the blessings and strength we need to finish the Work!

Paul wrote to the Hebrews whose faith and confidence in the New Covenant was vacillating and fading: “Cast not away therefore your *confidence*, which has GREAT RECOMPENSE OF REWARD” (Heb. 10:35).

And in verses 38 and 39 we read: “Now the just shall live by faith: but if any man draw back, my soul shall have no pleasure in him. But we are not of them who draw back unto perdition, but of them that believe to the saving of the soul.”

We can't allow ourselves to draw back! We must have *strong confidence* and *faith* in what God is directing us to accomplish.

Phenomenal Growth in Organization

Looking back over the last several years, we can see God has inspired fantastic innovations which have prepared us for the final gun lap of His Work.

The PLAIN TRUTH magazine has

undergone a transition which has catapulted it into an internationally recognized, worldwide news magazine dealing with the vital issues of the world today *and* the world tomorrow. Instead of reaching *only* religiously oriented people, who represent only a minor percentage of the population, it is reaching the *broad spectrum* — including people in high offices, the rulers and leaders — with the vital issues of the Bible, but in language they understand and will accept. We were never reaching those people before.

Then TOMORROW'S WORLD magazine was inspired to be published. It now reaches more people than *The PLAIN TRUTH* formerly reached. And it is theologically oriented, carrying articles on deeply Biblical subjects.

Do we realize how important these two innovations are? Do we realize what God has done — in just a short time?

Now, we have broadened the scope of *The PLAIN TRUTH* and our booklets to where the vital issues of God's Word are presented in everyday language. They are being read by and are influencing the lives of millions who were *never reached before!*

The radio and television programs are functioning on the same dynamic principle.

For those whose exposure to these issues causes them to want stronger meat, TOMORROW'S WORLD magazine is available to ever-increasing thousands who are beginning to hunger for God's Truth.

The hand of God in bringing this transition is so *obvious* when we reflect upon it.

But there is much more!

As people hear and view the programs and read the pages of *The PLAIN TRUTH*, they write for the literature which deals in more detail with these vital issues. And so in this same period God has inspired important changes in the booklets.

Many new booklets have been published which deal with the important subjects of today — pollution, crime, dope addiction, evolution, sex, child rearing, education, agriculture and the like. Many of these booklets contain the Biblical solutions in language

the public will read and understand.

But further, a new chaining system has been developed which keys each booklet to other important booklets which the reader is invited to send for. This way his progress is guided constantly toward more Biblical issues as his appetite and interest develop. TOMORROW'S WORLD magazine is one of those vital steps in the system.

Do we now begin to see and have more confidence in what God is doing?

Personal Correspondence Department

Another new development God has inspired in the last several months is the expansion of the Personal Correspondence Department, called "P. C. D." by us at Headquarters.

With the help of new computer systems we have greatly improved our ability to answer personally multiple thousands of letters from our readers. Within this system each letter which shows deep interest and involvement is personally handled by a specialist who can view our record of the individual's previous correspondence on a video terminal in order to tailor a personal answer, or recommend just the right literature for his spiritual growth.

Through this system new Co-workers who truly want to support God's Work are given personal help to grow in knowledge and understanding, to become stronger spiritually and to increase in their effectiveness in doing God's Work.

What tremendous progress God has inspired in His Work to help us build our faith and confidence and complete the job!

Data Processing

I mentioned new computer systems for the new P.C.D. department. But that's only part of the story!

By September of this year our new System 370 computer will be installed and in operation. The marvelous Model 360 which we have leased from IBM for the last several years is now an outdated system. Since they now have perfected a fourth-generation system 370, we are phasing out the old system and replacing it with the new at only slightly increased cost.

The new 370 has EIGHT TIMES the capacity of the 360 — yet occupies *less space*. With the completion of this installation we will have the capacity to store 10 MILLION names on our mailing list — all with the ability of instant display and review for personal handling.

In addition to these benefits the new computer will be supporting literally hundreds of other systems in accounting, receipting, tabulation and internal data that would take hours to tell you about.

How about that for progress and growth?!

Ambassador College Press

By fall, too, the Press will have completed the reorganization and development phase it has been undergoing in the last three years. The new C-38 Miehle press will have been installed together with other components, giving us the capacity to produce 10 MILLION copies of *The PLAIN TRUTH* — with less manpower and less space.

The Press has also ordered a Harris Intertype Fototronic 1200 Phototypesetting System. This computer-operated photo-composition system will enable us to set type with greater speed and much higher quality! Included with the system is the "latest thing" in editing — a Harris 1100 Editing and Proofing Terminal — which will enable corrections to be made on the tape before it goes into the phototypesetting unit. This marvelous editing system was just introduced on the market within the last year!

I wonder if we *truly do realize* there has been a powerful unseen Hand guiding this Work in which we can have STRONG CONFIDENCE?

Public Impressed by Facilities

Literally thousands of people visit and tour God's facilities here in Pasadena each year. Many are highly trained and sophisticated professionals from differing fields of business. They are deeply impressed with the beauty and the radiant happiness they find here. But they also are quite outspoken in their praise of *our professionalism* and sophistication.

Our highly progressive and efficient Data Processing Department is a by-

word in that industry. Our television production is highly respected in its field, to say nothing of the press and mailing functions which draw admiration and respect.

Our Food Service Department is a model for its efficiency and computer-controlled menus. Bankers consult our business department for financial advice. Our architectural and engineering departments are respected in the trade and by the city planners in Pasadena and surrounding areas.

Brethren, the general public realizes there is *something here*. They don't know what it is even though they might suspect. But *we do!*

And if we do, why don't we all let the knowledge that the Almighty God is directing this Work inspire us to have strong faith and confidence — living, *active faith* that believes, prays, hopes and strives for the finishing of this Work?

Present space won't permit me to tell you at this moment of all the other areas in editorial, overseas in the foreign work, Church organization, Festival planning, academic affairs, etc. where God's hand is everywhere at work and inspiring tremendous growth. But I think we already *know* that's true.

Graduate School Lectures

Perhaps one of the most inspiring things *God* has led His Work to begin in recent months is the Ambassador College Graduate School of Theology Lecture Series — or otherwise called the Tomorrow's World Bible Studies.

The first lecture series was conducted in Long Beach, California and was very successful. Now others are under way. Thousands are going to be brought that last step into firm action in the months ahead. If the "angels in heaven rejoice over one sinner brought to repentance," how much should we rejoice over this wonderful, inspired program!

The "spin-off" from all the changes which God has inspired over the last few months and years is thousands of people who have been nurtured and are now ready to be harvested.

God's systems are really producing fruit!

We can now see how the whole picture is taking shape. Like the links

of a chain, God is putting together the inspired program for finishing His Work. These Bible lectures help to complete the chain.

What an inspiration to know God is *in His Work* guiding us to fulfill His purpose. What strong assurance He gives us when we meditate on His works.

God said to the Israelites, "... How long will it be ere they *believe me* for ALL THE SIGNS which I have *shewed among them?*" (Num. 14:11.)

Unique Contacts

We have all read Mr. Armstrong's recent letters and articles about contacts with heads of state and key people around the world. Only we in God's Church can begin to realize the deep import and meaning of these contacts and what they portend for the future.

But one thing is clearly evident. These unique contacts and open doors are not the by-product of human ingenuity.

The foundation is being laid to bring light, understanding and a witness to this world. It's happening before our very eyes. *We're* a part of it. And the part we play is more vital than we realize.

God doesn't want us vacillating, unsure, lacking faith — but confident, sure, *full* of faith. If God's people at this time unitedly coalesce into a single body in belief and faith to support what God is doing, we will see a surge forward unprecedented in our time.

Our everyday lives need to be filled more and more with *God's* purpose so we are constantly exerting the positive force of faith, hope, desire and confidence in God. When we pray for the accomplishment of God's purpose through His Work, we must be single-minded in strong, positive faith.

James says: "But let him ask in *faith*, NOTHING WAVERING. For he that wavereth [in faith and confidence] is like a wave of the sea driven with the wind and tossed. For let not that man think that he shall receive ANY THING of the Lord. A double minded man [vacillating in faith] is unstable in all his ways" (James 1:6-7).

All of God's begotten sons unwaveringly *believing* in *faith* with *strong con-*

fidence that God is in His Work and that His will is being accomplished can exert a force so strong that *more* than mountains will be moved!

In verse 17, James tells us: "But every good endowment that we possess and every complete gift that we have received must come from above, from the Father of all lights, with whom there is *never the slightest variation or shadow of inconsistency*" (Phillips Translation).

We can be sure — have confidence — that what God has planned, He *will accomplish*. And just as there is no variation or inconsistency with God, brethren, so we too need that assurance, that steadfast confidence in God's Work and in His leadership so that there will be no variation or inconsistency with *us!*

Our faith must be backed up with works! Works which are expressed in what we think, how we feel, what we say. Our lives need to be *filled* with this Work — thinking positively, faithfully — speaking encouragingly — praying with hope and desire — yearning for the fulfillment of God's purpose.

This link of the chain **MUST** be there and be *strong* or the job will not be accomplished.

Be a Caleb

In a classic example of *lack of faith*, ten of the twelve spies who searched out the land of Canaan brought back an evil report that discouraged the people and turned them from faith in God. But Caleb (and Joshua) remained faithful. Caleb said to the people: "Let us go up at once, and possess it; **FOR WE ARE WELL ABLE TO OVERCOME IT!**" (Num. 13:30.)

Caleb looked squarely at the *signs* and *works* that God had wrought — and he was confident — full of faith. We need to have Caleb's faith and belief today.

Brethren, with all our hearts totally in and behind God's Work in believing, confident faith, we will not only be doing all we can physically, but we will *collectively* be bringing forth the sweet savor of faith and united confidence which will bring into action the mighty power of God and His Spirit in even *greater measure!* □

BUILDING A NEW FEAST SITE

The construction of a new Feast site is not an easy undertaking. It requires planning, surveying, good weather, equipment, hard work — and time. Read, in this concluding installment, just what it takes to get a new Feast site ready for God's people to use and enjoy.

by Raymond C. Cole

IN THE last issue we saw how Feast sites are selected. But what then? Once we have made the purchase, what goes into its preparation before God's people arrive to keep the Feast of Tabernacles?

How much work does it take to build a Feast site? What kind of work? How much time?

When you see the answers to these questions, your appreciation for the Feast of Tabernacles should be greatly enhanced. In time order, let's consider the step-by-step operation from beginning to end.

The Project Begins!

Before construction of a Feast site can begin, an accurate topographical survey is essential so that building, grading and storm drain locations may be chosen.

The "topo," as it is called, consists of stakes set in the ground in straight lines which cross each other at right angles at predetermined intervals. Intervals may vary from five feet to one hundred feet, very largely depending on the specific use intended for the property. Mountainous or hilly areas obviously not suited for major construction will be covered with large intervals. The more critical construction areas are covered with intervals varying from five feet to twenty-five feet.

With the aid of a good transit, target rod and appropriate note pads and paper, the surveyor commences the task of determining elevations at the intersections of the lines. These elevations are usually recorded as so much above mean sea level. As the surveyor progresses in his task, it is also essential that he note any unusual landscape features — such as trees, out-cropping of rock, unusually low or high areas and objects of interest.

After the surveyor has taken elevations at each peg station and noted any landscape irregularities he deemed necessary, his notes are submitted to the office for study.

Behind the Scenes

From the surveyor's grid, office personnel in the engineering department commence the drawing of contour and topographic maps — the next vital step in the development of a Feast site.

What are the purposes of contour and topographic maps?

From the contour map we can develop the master plot plan, design new grades — new contours for the terrain — and make accurate determination of location and amount of earth which has to be moved. From the topographic maps we can locate all landscape features and construct storm drains.

But these maps are just a beginning.

Since public buildings are subject to state codes and regulations, designs and plans for new buildings must be submitted to various state departments for approval. They want to see detailed plans — foundations, architectural, plumbing and electrical — for the administration building, convention center and control booths.

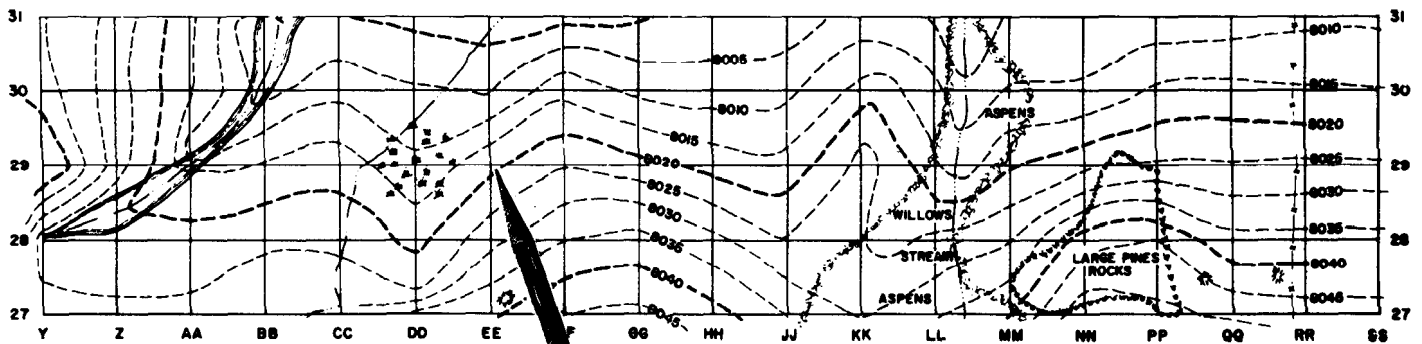
Still other plans are necessary. A complete utility plot plan — a plan indicating trenching for the water system, the storm drain system, the area lighting system, the sewer system, catch basins and manholes — must be furnished.

For our own use, many schedules and specification sheets are required. These schedules indicate types and quality of construction materials — including masonry, carpentry, electrical and plumbing supplies, windows, doors, exterior and interior finishes — even the acoustical tile, floor coverings, interior electrical fixtures, hardware and furnishings that will complete the job.

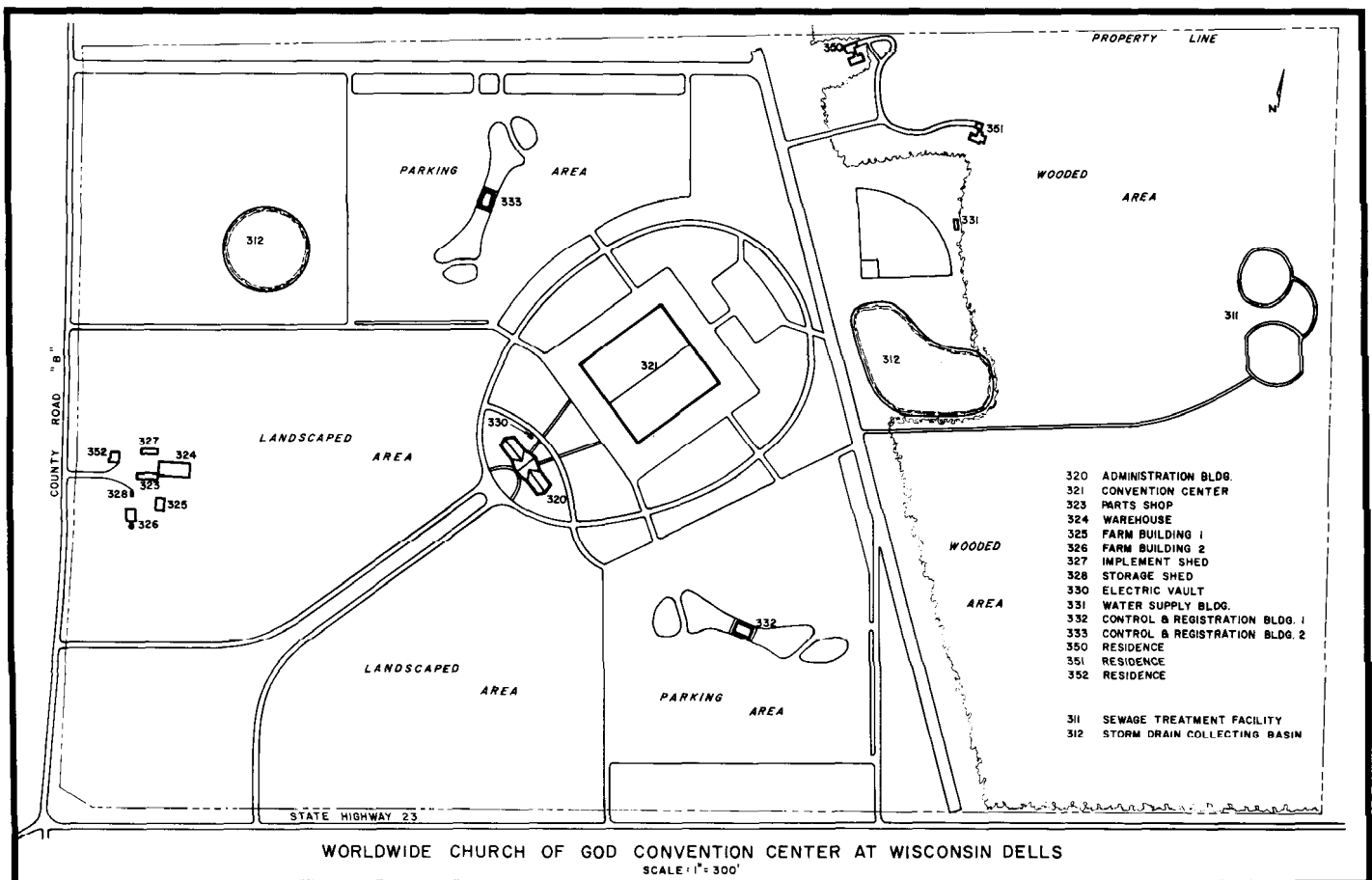
With complete, well-detailed specification sheets, our field men can efficiently operate. Their blueprint for success proceeds from the office. On the other hand, lack of vision and competent planning could cause us much anxiety as well as loss to the Church of the savings which can be realized from skilled organization.



Ambassador College Photos



Surveyors (top left) compile data on ground contour and topography at beautiful Estes Park, Colorado, from which grid map (portion shown above) was made. Pencil on map points to topographical grade stake 29EE (top right). Below is master plan for Wisconsin Dells site, scheduled to be ready for use in the fall of 1972.





Ambassador College Photos

After our building plans are completed, there must be plans for parking places and means of traffic control. Adequate roadways, ample parking, carefully planned and constructed walkways from parking lots to the convention center are fundamental to the Feast operation, and must be designed with the members and the overall conduct of the Feast in mind.

These, briefly, are the general engineering requirements for the development of a Feast site.

Now we are ready to begin the actual excavation of earth and construction of facilities!

The weather is favorable. Equipment is serviced. Crews are ready and eager! Now, at last . . .

The Earth Moves!

D-day arrives. Calculations have been completed. The equipment moves to the field — D9 Caterpillar tractor, #621 motorized scrapers (sometimes called "pans"), wedge and sheepsfoot compaction rollers with power units, self-propelled steel wheeled rollers, pneumatic roller and vibra-pac roller. Quite an array of equipment. But where do we start?

If topsoil exists, it must first be stripped and stockpiled for future usage. Topsoil, filled with humus and other organic material, should not be used as base material.

The first 621 motorized scraper bites the earth. With the aid of the D9 Caterpillar tractor — commonly referred to as the "pusher" — the 621 scoops up a capacity load of about 21 or 22 cubic yards. Once loaded, the scraper travels rapidly under its own power, carrying earth from "cut" areas to those to be filled. Two such scrapers alternate, each hurtling back and forth as many as 90 to 115 times to move a total of 3,500 to 5,000 cubic yards daily.

With topsoil removed, the more granular soil underneath may be moved. High areas are cut down and the lower ones are filled. For efficiency and to minimize costs, scraper runs are kept as short as possible.

The average excavation requirement for a completed Feast site is from 250,000 to 300,000 yards. Moving an average of 4,000 yards daily, it will take the excavation crews at least sixty to seventy-five working days to complete the job. Considering week-ends, weather, and breakdown time, that will be a calendar time of approximately five months.

As areas are filled, care must be exercised in the deposition of the disturbed soil. The greater the fill, the greater the care. Soil improperly compacted can lead to disastrous consequences — buildings, roadways and parking lots will settle, pipes will break and other problems

A giant 621 scraper bites great chunks of earth. The D-9 Caterpillar behind is used as a "pusher." Right: Thousands of feet of cable must be laid at each new Feast site. Far right: Vital storm drains must be installed at each Feast site.

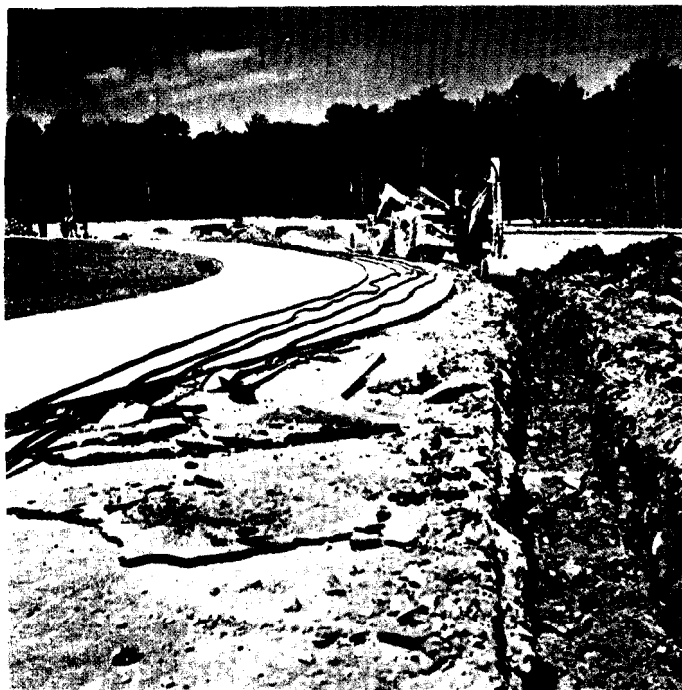
arise. And repair is both inconvenient and expensive.

To accomplish maximum original compaction, the soil should be laid down in lifts or layers having a depth of no more than four to six inches. Before subsequent depositions, compaction equipment must roll and compress the soil. Type and weight of equipment used varies according to the composition, density and moisture content of the soil.

Gradually, as the days roll by, the new contours indicated by the master plot plan begin to emerge.

New Contours

For aesthetic reasons, an elevation slightly higher than the surroundings is achieved for the administration building. A large apron area — on which the convention center will be built — is graded to the appropriate slope for drainage. Roadways and walkways are graded to specifications. Parking lots are designed so as to add variety and interest. The sewage lagoon, and lakes, if any, are dug and shaped. Broad and



spacious landscape areas are created.

Viewed as a whole, the total picture emerges — a Feast site of interest and beauty. It is a most thrilling experience to see the development of our conceptions and aspirations.

Yet, we are still a long way from completion.

The Unseen Half

The average person who uses these facilities will take much of the construction for granted. But every facet of the operation is vital. Now, we must go underground. Let's come to appreciate those *little* services which are serving us so routinely, yet very effectively.

In a single Feast site there are *miles* of underground work. Typically, there will be over a mile — from 5,000 to 8,000 feet — of underground electrical cable serving various buildings, area lights and the water system. Water lines to serve all areas of the site will require over two miles of trenches.

Storm drains of corrugated metal pipe will be laid in excess of one mile. To feed into these, catch basins — collection points for the voluminous amounts of water flowing from parking lots, roadways, walkways, roofs and surrounding landscaped areas — must be constructed. Water shed from the roofs of the convention center and the administration building alone will total at least 69,000 gallons in a typical one

inch rainfall. But most areas have much heavier rains than one inch, so our facilities must be constructed to handle the ultimate eventuality.

Rainfall of four inches will produce a flow of 275,000 gallons from the two buildings. From the parking facilities and roadways, the system would be required to handle 3,685,000 gallons. And all of this — frequently — in no more than two to three hours!

How much water is that?

The average American uses 50 gallons of water per day for domestic purposes — bathing, showers, car wash, lawns, etc. At that rate, the volume of water which might fall on our property in a period of two to three hours would satisfy the demand of 200 Americans for one whole year.

As you can plainly see, this amount of water could pose a very real problem. Unprovided for, it could be disastrous to the physical plant, to say nothing of its effect upon *you* at Feast time.

A completed sewage system will require at least another 3,500 feet of trenching. The sewer pipe has to be laid and manholes constructed, enabling both cleaning out the system and changing the destination of flow. Service connections to buildings must also be made.

More trenching is required for the construction of foundations for the buildings. Footings must be poured, and foundation walls laid rising to pre-

determined ground level. Beneath the future buildings themselves, underground electrical conduit and necessary sanitary piping must have been positioned.

All in all, a total underground network of *seven to ten miles* of cable, piping and conduit is laid. As each part of this underground work is completed, the trenches are filled and care is exercised to bring compaction back to acceptable standards.

Now actual construction above ground can begin. A full unseen *half* of the project has been accomplished.

Now: Above Ground

Once all foundations are laid, the *visible* part of the administration building can begin to rise into view. Walls rise, stone is laid, trusses are positioned, beams placed, decking and sheeting are nailed down. Now we may begin roofing — using very handsome cedar shakes. Gables, fascia boards and soffits come next.

Windows may be set in at this time, and epoxy work, with exposed marble, may be completed.

The outside is now basically finished.

On the inside, interior walls begin to manifest each room's configuration. Dry wall goes up. Paneling is glued and nailed. Ceilings are hung.

Concurrently with this construction, considerable plumbing and electrical

work is done. Heating and air conditioning systems are installed.

Then finish work commences — trim work, painting of walls, staining of wood, laying of carpets and tile, hanging of electrical fixtures and final placing of plumbing fixtures. The administration building nears completion. Last-minute details, such as cleanup and the forming and pouring of sidewalks are accomplished.

On to the convention center! The red iron and sheeting has arrived in readiness for this hour. On the underground bearing pillars, footings and foundation walls, previously prepared ridged wall frames are set up. Next the center columns go up. The area begins to look like a young forest. On top of the columns the beams which support the roof are placed. Stabilizing sidewall girts and roofing purlins are bolted in place. With this network of steel in place, we are ready to commence the sheeting.

Lastly the floor is laid, restroom facilities built, doors hung, electrical and plumbing work completed. The meeting hall is now complete.

Crews now begin the final buildings — the two control booths. Footings and foundation walls in place, the buildings rise rapidly. With a rustic design, they blend harmoniously with the around.

As the buildings near completion, the site is basically ready for the fall Feast. But where are the parking lots? The

roadways and walkways? These also are very necessary for your convenience and safety.

Laying a Black Carpet

During the time of building construction, continuous compaction and final grading are in process. Roadways have been shaped, given their final crown, curves and shoulders. Parking lots have been graded to perfection and walkways staked out.

We are now ready to lay down approximately 50 acres of bituminous asphalt paving. There are over seven acres in the apron area alone, over twenty-eight acres for general parking, and two to four acres for close-in special parking, at least twelve acres in roadways and finally a good two to three acres in walkways. This is the approximate equivalent of twenty miles of any standard country road about twenty feet wide.

That is a lot of blacktopping for each Feast site, but what a convenience! It must surely add immeasurably to your enjoyment of the Feast. With parking lots and roads properly graded, storm drain system adequately sized, walkways elevated — there should be no mud-holes to wade through. This is our sincere and conscientious aim.

But we are not quite finished yet. Remember that stockpile of topsoil? We are ready to replace it. With the help of our scrapers, this soil will be distributed

evenly and graded smooth over areas to be landscaped. We are ready for God's final touch of beauty.

The Final Decoration

Now the "green thumbs" go to work. Areas to be covered with grass will be either seeded or sodded — whichever will be more effective in that particular area. The carpets of green will be interrupted occasionally with well-planned gardens of flowers and shrubs.

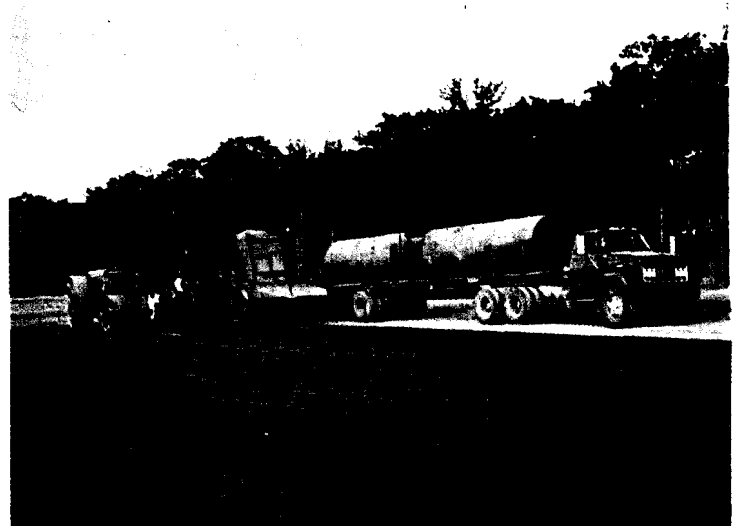
In every area, the convention facilities have sparked considerable community interest, because the design and landscaping makes each one a place of beauty. Our purpose is to continually improve on this phase of the work. For our God is a lover of beauty. We strive to have the most beautiful, interesting and well-maintained facilities possible.

With the finishing touches accomplished, the project is complete. We are ready for you to attend the Feast.

Summary Facts

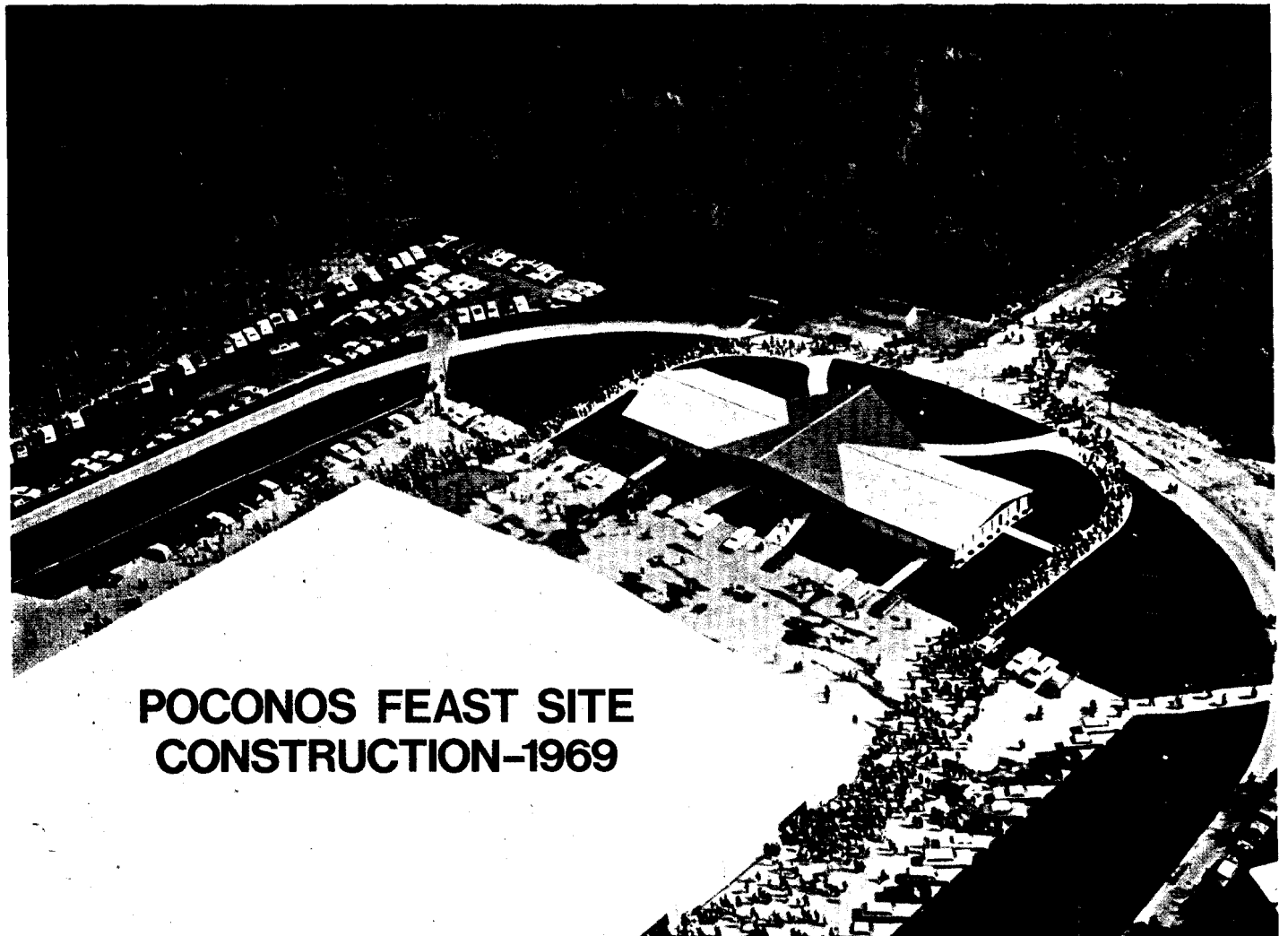
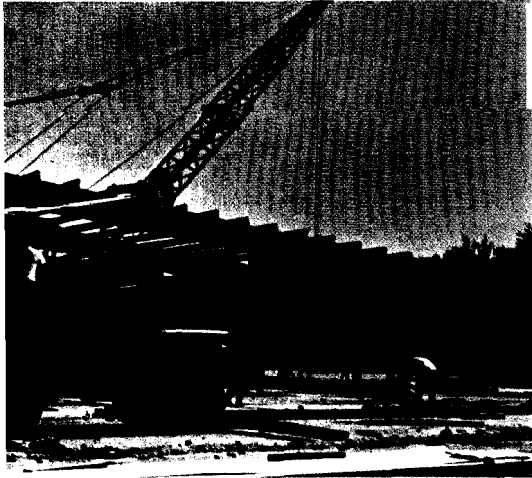
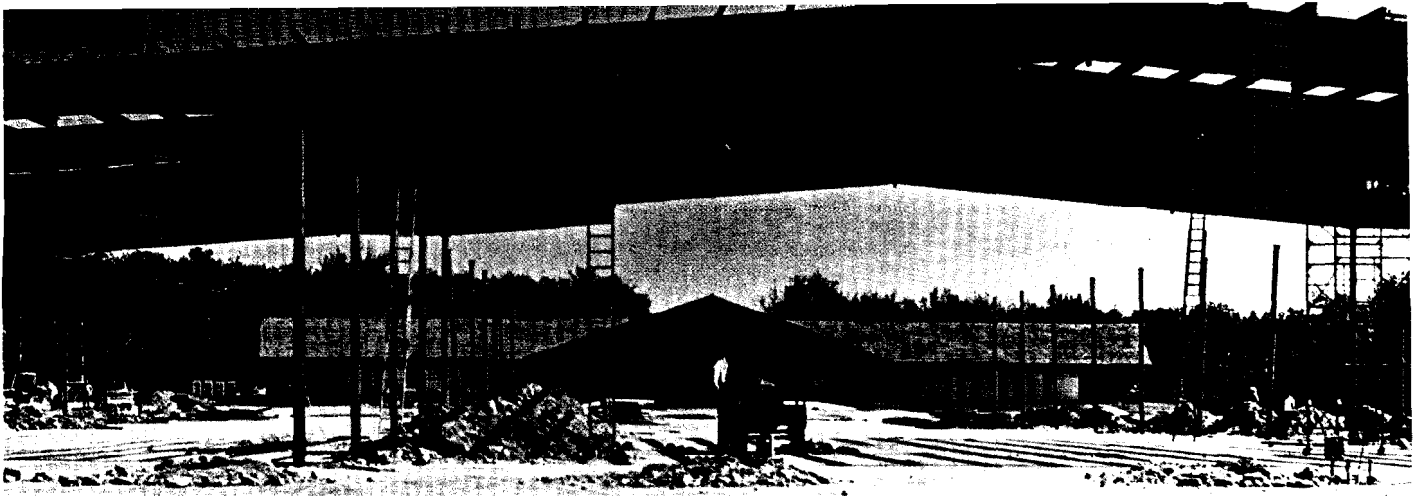
The completion of one Feast site requires the work of about fifty men for a period of one year — that is a total of 2,000 man-hours per week — over 100,000 man-hours for the year. Labor alone costs upwards of one half million dollars!

Brethren, this is the behind-the-scenes story of the development of a new Feast site. It is an exciting story, especially for
(Continued on page 10)



Ambassador College Photos

Left: Mr. Raymond Cole does not confine his work to a desk! Here he helps with paving at the Poconos site. Asphalt laying equipment (above) stands beside an area of finished pavement.



**POCONOS FEAST SITE
CONSTRUCTION-1969**

HAVE YOU SENT IN YOUR "TITHE OF THE TITHE"?

In his articles, Mr. Raymond Cole has given us the inside story about the planning and development of our Festival sites. He also explained briefly about OUR responsibility. Not only are we the recipients, the benefactors, of all that God has inspired to be planned and built, but we are also responsible for the continued success of Festival development!

At the Feast of Tabernacles we dwell in temporary abodes (motels, cabins, tents), symbolizing that we are wayfarers — that we do not belong to this world's system. We look forward to dwelling in peaceful surroundings for seven days, picturing the millennium — the peaceful, wonderful world tomorrow under God's rule. We look forward to inspired messages and spiritual fellowship at the places God has chosen and caused to be developed for the enjoyment of His people.

But brethren, unless we provide the finances and put our prayers into this vitally important function of God's Church, the entire Festival operation could be severely restricted now and in the years ahead. Without *additional* SPECIALLY PREPARED Festival sites like the Poconos, the Ozarks, and the Wisconsin Dells, our whole observance of the Feast could be greatly impaired. And remember that it takes a great deal of money to maintain the sites we have already developed.

God has inspired this Festival development program for His Church during the "end time" period of this age. He has provided the way to finance the construction of beautiful Festival sites by inspiring the creation of a special fund for Festival development. As most of you know, it's called the "tithe of the tithe." The article, "What's a Feast?" which appeared in the January-April issue of the GOOD NEWS explained how this special fund was established.

We, the members of God's Church, the users — the ones who assemble to worship God at the places He has chosen — should finance Feast development by paying a "tithe" (10%) of our second tithe. The giant Festival operation that you are a part of **DEPENDS** on your *tithe of the tithe!*

Festival planning must continue to move forward. It must keep pace with the growth of God's Church. The tithe of the tithe, **NECESSARY** for the Festival operation, is desperately needed now. If you have not already sent in your tithe of the tithe this year, then please include it with your regular tithes and offerings which are collected in your local area, and then forwarded to Headquarters. Please do it *this week* if at all possible.

Simply estimate the amount of second tithe you will have saved this year and send in one tenth of that amount as your tithe of the tithe. **But don't forget to label this amount as "tithe of the tithe," otherwise it will be counted along with your regular tithe and offering.**

When you send in your tithe of the tithe, remember God's instruction that we are also responsible for the Levite, the stranger, the fatherless and the widow. If it is possible, therefore, for you to estimate now your fall second tithe needs and send along a portion of your surplus for them, it would greatly help us to assist a large number of those who will need help to attend the Feast of Tabernacles this fall.

Thank you, brethren, for taking this to heart and for your response!

—PAUL S. ROYER

those of us who see the progress day by day. It is also very rewarding work, when we see thousands of you thoroughly enjoying and benefiting from the Feast and making full use of the facilities God has provided.

Do you enjoy a nice convenient place to keep the Feast? Do you appreciate dry, asphalt parking lots? The administration building?

You do? Fine! But you have *your part* — your prayers and faithful contributions — your "tithe of the tithe."

Your Part

God commands us to keep the Feast. He commands us to eat of "the *tithe* of thy corn, of thy wine, and of thine oil, and the firstlings of thy herds and of thy flocks." However, nothing here implies that our total second tithe is to be consumed by our appetites. It is but *one* of our Feast oriented expenses. There are others.

Continuing: "If the way be too long for thee . . . or if the place be too far from thee, which the Lord thy God shall choose to set his name *there* . . . then shalt thou turn it [the second tithe of your increase] into money . . . and shalt go . . ." (Deut. 14:23-25).

So the second tithe is also used for Feast travel. And here is the principle regarding the use of your second tithe: Second tithe is used for *all* your Feast expenses.

We go to a designated place. We eat. And lodge. But have we kept the Feast? No! Tourists accomplish these things almost every day of the year.

What is the real purpose of our going? To keep a *spiritual Feast* in fellowship with God and His children. But this requires the physical Feast plant. So until you have used a portion of your second tithe — the "tithe of the tithe" — to help provide for this need, you are not at liberty to spend it all on yourself.

This is what, years ago, God led His ministers to see.

When you have faithfully done your part to *help provide the facilities*, and have come to the place where we are ordered to convene, then truly "Thou shalt REJOICE, thou, and thine household" — and live the full abundant life before God! □

VISIT TO MT. SINAI



Ambassador College Photo

In March of this year two editors of the GOOD NEWS — Drs. Hoeh and Martin — together with Vasili Constantinos of the Jerusalem dig, were guests of the Israeli Military Government of the Sinai. While there they traced the route of the Exodus, beginning at Marah near the Mitla Pass. This second report commences with Israel's crossing of the Red Sea.

by Herman L. Hoeh

THE CHILDREN OF ISRAEL crossed the Red Sea during the final night of the last high day of the Feast of Unleavened Bread. That night corresponded to the night at the end of Tuesday and the beginning of Wednesday.

Exodus, chapter 15, tells us the children of Israel spent the daylight part of that second annual Sabbath in song and triumph, for their enemies all lay dead on the seashore. Now notice what happened immediately after that triumphal occasion.

The Next Three Days' Journey

“So Moses brought Israel from the Red Sea, and they went out into the wilderness of Shur; and they went three days in the wilderness, and found no water” (Exodus 15:22).

The “wilderness of Shur”? “Three days’” journey?

We have already met this wilderness in a previous verse — Exodus 13:20. “And they took their journey from Succoth, and encamped in Etham, in the

Looking north from the southeastern edge of the rim of Mt. Sinai. Dr. Hoeh is atop rock on inside of eastern rim. Little valley inside Sinai is to left, below.

edge of the wilderness.” Etham, where Israel had earlier encamped, was on the very border of Egypt and the wilderness of Shur in northwestern Sinai. If the Israelites had, at that time, proceeded immediately into the wilderness, instead of turning to Pihahiroth, they would have left Egypt before the days of Unleavened Bread were fulfilled. But since leaving Egypt is a type of leaving sin, God planned that they should take seven days, not five, to come out of Egypt.

It was a three-day journey from the shore of the Red Sea to their next major encampment in the Sinai. That is, three days’ journey from that Wednesday, Nisan 21, the last day of Unleavened Bread. Three days’ journey from Wednesday brings us to a weekly Sab-

DISASTER AT THE RED SEA!

ANCIENT Arab historians have preserved the tradition that some time in the distant past the coastlands of the Red Sea and the environs of Mecca were devastated by a great catastrophe. The dating of this memorable destruction has great significance for Biblical studies.

What was the cause of this calamity, and when did it occur?

Several Arab historians have preserved this tradition of a terrible destruction. The account handed down by Abu'l Faraj in his *Book of Songs* is as follows:

The tradition reports that the Amalekites violated the privileges of the sacred territory and that the Almighty God sent against them ants of the smallest variety which forced them to desert Mecca. Afterwards the Lord sent drought and famine and showed them the clouded sky at the horizon. They marched without rest toward those clouds which they saw near them, but were not able to reach them; they were pursued by the drought which was always at their heels. The Lord led them to their native land, where He sent against them "toufan" — a *deluge* (trans. F. Fresnel, *Journal Asiatique*, 3rd Series, vol. VI [1838], p. 207).

The same catastrophe is also recorded by Mas'udi. The children of Hadoram (Gen. 10:27) — Jorham in Arabic — were among the first who had settled in the vicinity of Mecca. Here they lived in proximity to Amalekites and lesser tribes, until "an impetuous torrent swept them all away in a single night" (Mas'udi, *Les Prairies d'Or*, trans. Barbeir de Myenard and Pavet de Courteille, vol. II [Paris, 1965], page 359).

Quoting the ancient poet al-Harith, a descendant of the few Jorhamite survivors, Mas'udi reflects:

From al-Hajun up to as-Safa all became desert; in Mecca the nights are silent, no voice or pleasant talk. We dwelt there, but in a most tumultuous night in the most terrible of devastations we were destroyed (Mas'udi, vol. II, p. 359).

When did this great cataclysm take place? Again, Mas'udi provides the answer. He records the tradition that Ishmael, the son of Abraham by Hagar (Gen. 16:15), settled in Mecca where he married the daughter of Modad, a

Jorhamite. After Ishmael's death, his son Nebajoth briefly ruled the city. Next the Amalekites became powerful, but soon the Jorhamite Arabs, under their leader al-Hareth, defeated them and maintained predominance over the city "for about three hundred years."

At the end of this period, when the Jorhamites were being ruled by another Sheikh called Modad, they were defeated by the Ishmaelites, who had grown in numbers, and were forced to leave Mecca. The tribe retreated northwest to the Red Sea coast, where shortly afterward "an impetuous torrent swept them all away in a single night" (Mas'udi, pp. 358, 359).

Umayya ben Abu es-Salt alluded to this event in the following words:

In the days of old the Jorhamites settled in Tehama [the low-lying coastal plain of the Red Sea], and a violent flood carried them all away (*ibid.*, p. 359).

Note that this event took place a little over 300 years after the death of Ishmael. There are just over 300 years from that date until the *Exodus* (Gen. 17:24, 25; 25:17; Ex. 12:40).

What the Arabs experienced was most likely nothing other than some of the effects of the catastrophes and plagues which devastated Egypt! The "impetuous torrent" which "is known by the name of 'Idam' (fury)" could have been the huge tidal wave generated by the collapse of the waters after the Israelites had crossed through the Red Sea. Imagine the force generated by two five-mile long walls of water suddenly crashing together. Preceded by a violent storm (Ex. 14:21, 24, 25), this tsunami raced up and down the narrow land-locked sea, wreaking havoc along the low-lying coast. Whole coastal tribes were swept away. Even Mecca, which is on the edge of the plain, lay in ruins. Survivors were either absorbed among the other descendants of Joktan and of Ishmael, or else dispersed abroad.

Thus the flood that engulfed Pharaoh's host may indeed still live in the memory of the Arabs as a very real cataclysmic event!

— Gunar Freibergs

bath — Nisan 24 that year. Count it! Saturday is three days from Wednesday.

Now we will begin to see that the recorded encampments in Sinai were a series of weekly Sabbaths. Though the people stopped to rest daily, or several times a day, to eat, sleep and take care of their personal needs, it was every Sabbath that they encamped to rest for a day. They were being taught the habit of Sabbath keeping!

The Miracle at Marah

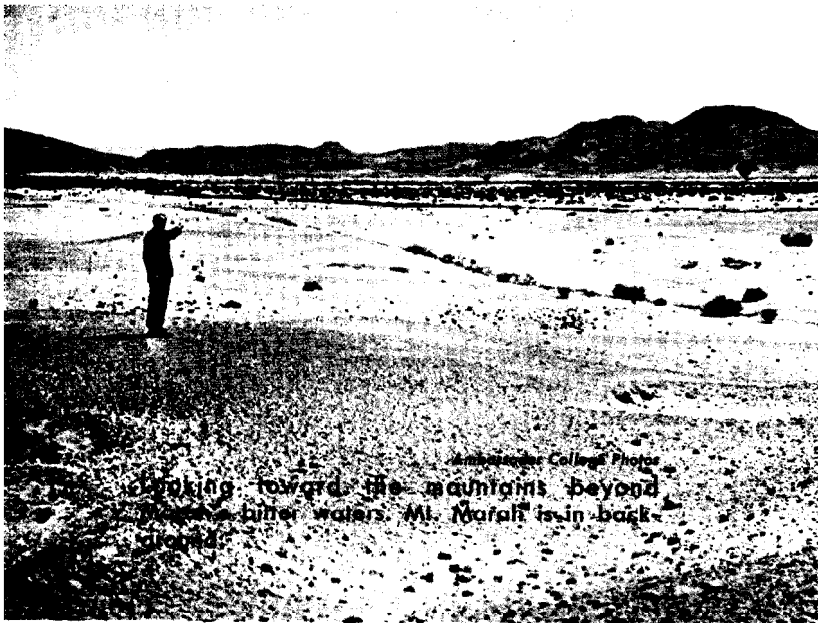
At Marah our journey from Jerusalem into the Sinai met the route of the *Exodus*. We took the little-traveled route across the northern Sinai over which the Israeli tanks sped to the Mitla Pass. Here, at the Mitla Pass, we first peered out westward across the wilderness of Shur to modern Egypt across the Suez.

To either side of the Mitla Pass are low mountains. The mountain (594 meters or 1950 feet high) to the south of the pass is called Gebel Marah on present-day maps. The meaning in English is Mt. Marah. In the wilderness of Shur a little to the southwest of Mt. Marah the children of Israel must have encamped that first Sabbath in Sinai. A wadi (dry river bed) in this area receives the runoff from Mt. Marah whenever a desert thundershower occurs.

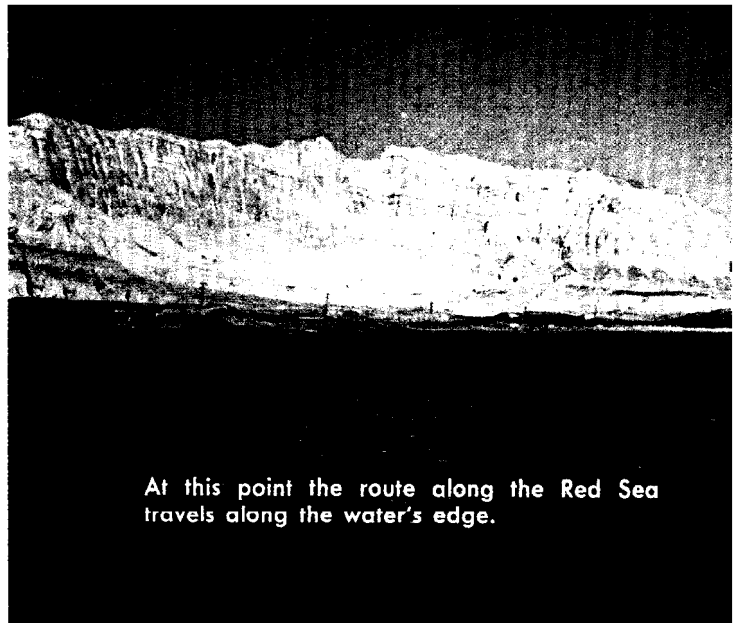
In this area there is to this day only one source of water for traveling bedouin — a single well on the edge of the wadi (32° 48' east longitude). It was in all likelihood into the waters of this well that Moses cast a tree, after which the water — by supernatural intervention — became sweet or fresh.

In years past I used to query why it was that God showed Moses a tree which Moses cast into the water. The answer is that throughout the Sinai, in wadis one can find half-buried palms and other trees that have been uprooted by the torrents of rushing waters after thundershowers. The trees may be carried many miles and are deposited in the wadis whenever the waters recede. Thus we read in *Exodus* 15:25, "... and the Lord shewed him [Moses] a tree" — probably barely visible in the sand and gravel overburden — which Moses ordered cast into the waters.

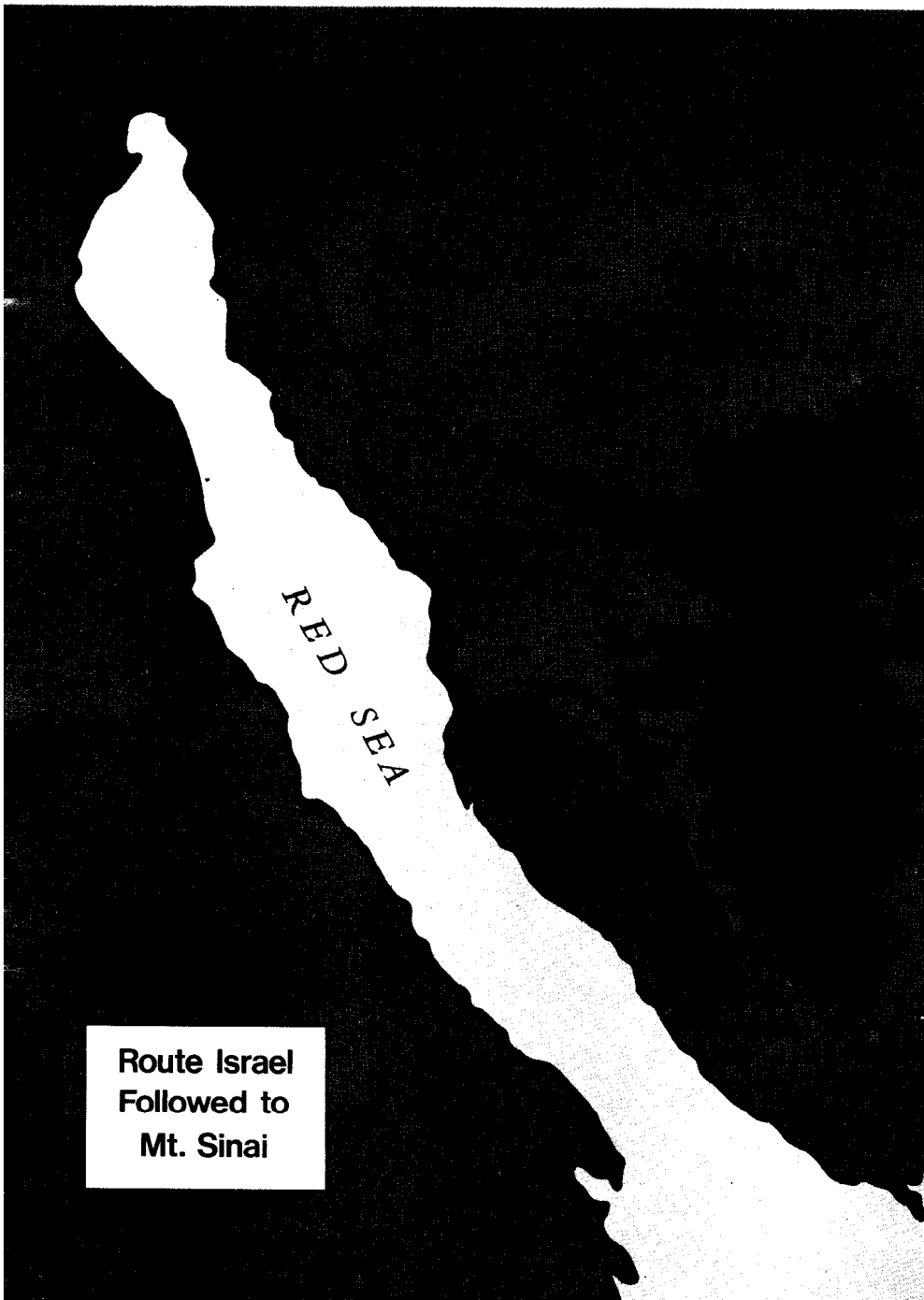
It was not the fallen tree which made



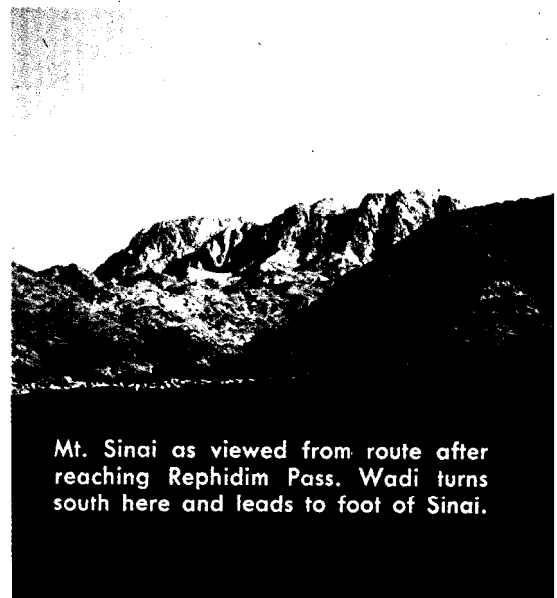
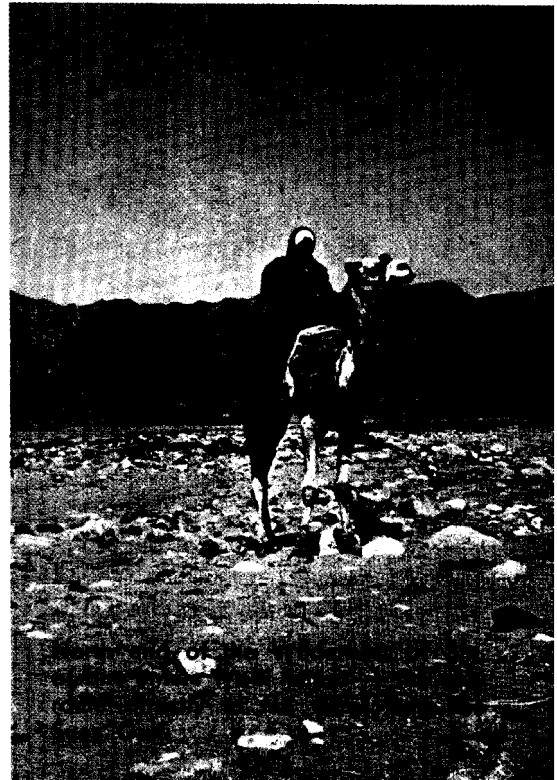
Amherst College Photo
Looking toward the mountains beyond
the bitter waters. Mt. Marali is in back-
ground.



At this point the route along the Red Sea
travels along the water's edge.



Route Israel
Followed to
Mt. Sinai



Mt. Sinai as viewed from route after
reaching Rephidim Pass. Wadi turns
south here and leads to foot of Sinai.

the water potable. It was the God of Israel who did it! But the people had their part in the miracle. They had to work at dragging that tree to the well. Faith without work, or works, is dead! They had to believe, while laboring and sweating, that when they had finished their part God would do His!

Thus we read: "...there he [the Lord] made for them a statute and an ordinance, and there he proved them, and said, If thou wilt diligently hearken to the voice of the Lord thy God, and wilt do that which is right in his sight, and wilt give ear to his commandments, and keep all his statutes, I will put none of these diseases upon thee, which I have brought upon the Egyptians: for I am the Lord that healeth thee" (Exodus 15:25-26). Just as the waters of Marah were healed, so today God heals — but we have our part, the calling of the elders, anointing the sick and the prayer of faith.

All this was a very important lesson about healing which the Israelites should have learned on that Sabbath.

Northern Route, or Southern?

There is significant controversy among scholars today as to the route of the Exodus in Sinai. The traditional view is that the children of Israel turned southward to the traditional Mt. Sinai in the southern part of the peninsula. A majority of modern critical writers prefer one or more "possible" northern routes.

We had the enlivening experience of participating in a discussion of this very matter with the former and the present Israeli Governors-General of the Sinai. The present Governor-General resides at the traditional Mt. Sinai in the south of the peninsula. We were his guests and ate at his table. He invited us to his quarters on our first evening at the traditional Mt. Sinai. His special guest was the former Governor-General of the Sinai — Major Rothem. Together they discussed the route of the Exodus and the site of Mt. Sinai. The northern route was espoused by our host, the traditional route by the Major.

Naturally no agreement was reached. But the answer is plainly found in the Biblical record. The children of Israel encamped by the Red Sea (Numbers

33:10-11) on their route from Marah to Mt. Sinai. There would have been no need to return to the Red Sea if Mt. Sinai is somewhere in the northern Sinai peninsula. This verse makes sense only if a southern route is followed — the traditional route. We shall see this proved as we follow the Biblical account of the encampments.

The Springs of Elim

From Marah the children of Israel journeyed to Elim — a word meaning "mighty ones" in English. "And they came to Elim, where were twelve wells of water, and threescore and ten palm trees..." (Exodus 15:27). This is not an accurate rendering of the original Hebrew. There were not twelve wells, but twelve springs. The Jewish Publication Society translation renders it correctly: "And they came to Elim, where were twelve springs of water..."

In Numbers 33:9 the King James Version translates "twelve fountains of water," and the Jewish translation uses "twelve springs of water."

It is significant that, traveling southward from Marah, the next logical stop a week later brings us to the only area in all the Sinai where there are to this day an abundance of natural springs — the region of Gebel Sumar. Present-day maps show eleven springs along several wadis flowing into Wadi Wardan. In Moses' day these springs — and a twelfth one — must have flowed more extensively, pouring their waters into the wadi along which the Israelites — over two million of them — were encamped that Sabbath, the first day of the second month, Iyar 1.

The area of Elim by Wadi Wardan is still significant, for at present the Sinai's largest airport is located nearby.

"And they [the Israelites] removed from Elim, and encamped by the Red Sea" (Numbers 33:10). As we journeyed south along a modern Egyptian-built road, the land became more mountainous near the coast along the Gulf of Suez. No longer could the arm of the Red Sea be seen far to the right, as we had commonly been able to see it between Marah and Elim. The mountains began to hem us in. Then suddenly, as we drove through the narrowest pass there opened before us

the unexpected, breathtaking view of the Red Sea directly ahead! The sun was dropping low toward the western horizon.

Anyone who has traveled this route knows that the only pass along the western Sinai coast is at this point. The children of Israel had no choice but to encamp by the Red Sea after journeying through the pass. And there are no recorded complaints, either. It is one of the most beautiful regions in the whole of the Sinai. Up until the Six Day War there existed an Egyptian officers' retreat near the pass overlooking the Red Sea.

The time of this encampment would have been Sabbath, the eighth day of the second month. From the Red Sea encampment the children of Israel journeyed slowly along the foot of mountain bluffs that extend nearly into the sea at this point.

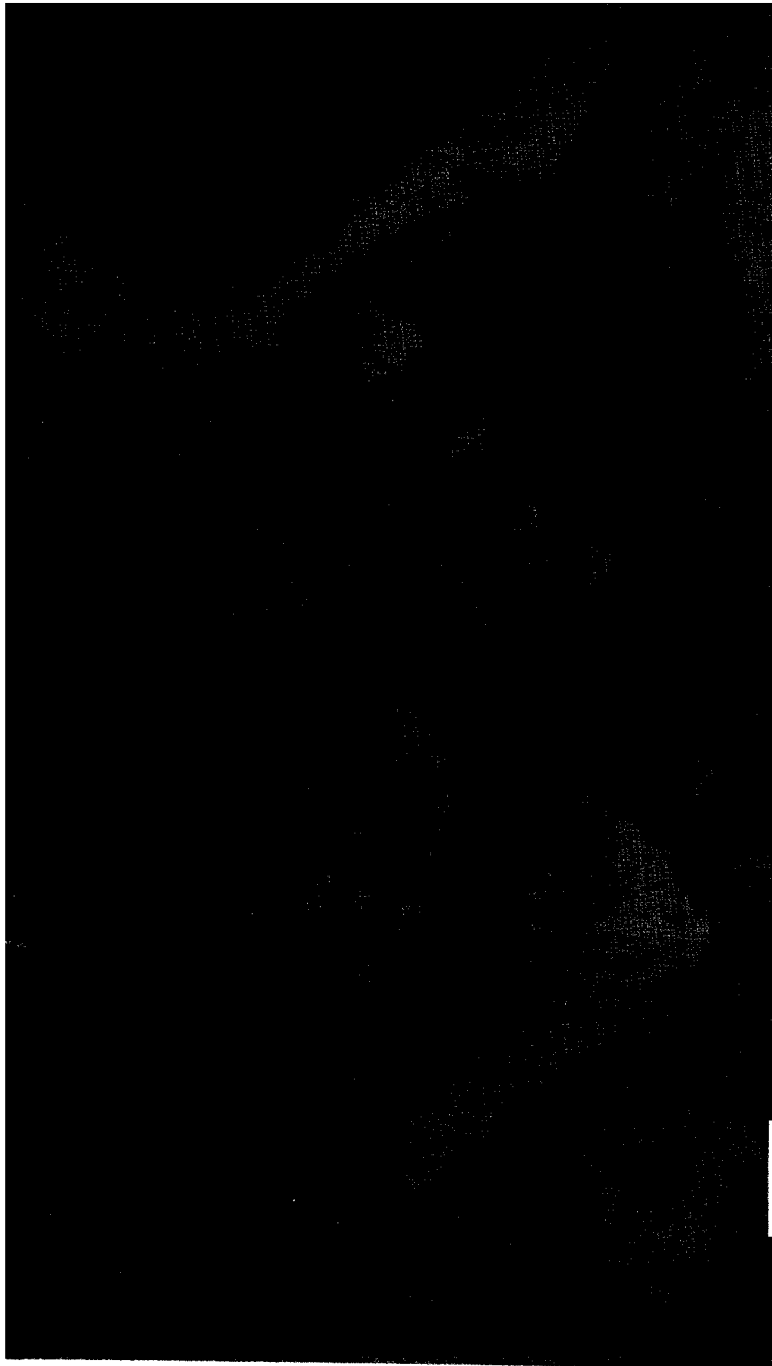
The Next Sabbath

The Biblical account now continues: "...and all the congregation of the children of Israel came into the wilderness of Sin, which is between Elim and Sinai, on the fifteenth day of the second month after their departing out of the land of Egypt" (Exodus 16:1).

Two important points must be noted. One is the place. It is the wilderness of Sin, the desolate, nearly uninhabited sandy plain along the southwestern coast of the Sinai Peninsula. It is still known by that name among bedouin today. The Israelites entered only its northern region before turning eastward into the interior of the peninsula.

The second point is the time. It is the fifteenth of the second month. This is exactly a week after the eighth of Iyar, the postulated time of the previous encampment. There can be no doubt. These were Sabbath encampments. Since the Passover, Abib 14, was a Wednesday that year, Iyar 15 is consequently a weekly Sabbath.

Now observe what occurred this particular Sabbath in the wilderness of Sin: "And the whole congregation of the children of Israel murmured against Moses and Aaron..." (Ex. 16:2). That day, the 15th of the month, a Sabbath, the Lord said to Moses: "Behold, I will rain bread from heaven for you;



Ambassador College Photos

1. Aerial view of rugged Mt. Sinai with place of encampment at upper left. **2.** Looking down from the eastern rim of Mt. Sinai into a miniature valley within the mount. **3.** View from the eastern rim looking eastward into valley where Israel stood to hear God's Law. **4.** The "traditional" rock that Moses struck reveals twelve remarkable water stains!



and the people shall go out and gather a certain rate every day, that I may prove them, whether they will walk in my law, or no."

Here was God's law — *before* Sinai!

Continuing: "And it shall come to pass, that on the sixth day they shall prepare that which they bring in; and it shall be twice as much as they gather daily" (Ex. 16:4-5). They were told in advance to prepare for the following Sabbath by gathering twice as much the coming Friday.

When was this miracle to begin? "And Moses and Aaron said unto all the children of Israel, At even, then ye shall know that the Lord hath brought you out from the land of Egypt" (verse 6). "And it came to pass, as Aaron spake unto the whole congregation of the children of Israel [near the close of the Sabbath], that they looked toward the wilderness, and, behold, the glory of the Lord appeared in the cloud. And the Lord spake unto Moses, saying, I have heard the murmurings of the children of Israel: speak unto them, saying, At even [between the two evenings, at dusk] ye shall eat flesh, and in the morning ye shall be filled with bread. . . . And it came to pass, that at even [at the end of that Sabbath] the quails came up, and covered the camp: and in the morning [of the very next day, Sunday the 16th of the second month] the dew lay round about the host. . ." (verses 10-14). Out of the dew manna appeared.

Then for six days, the children of Israel slowly journeyed eastward to Dophkah (Num. 33:12) in the northern part of the wilderness of Sin.

Journeying Through Wadi Feiran

From the plains of the northern wilderness of Sin we also turned east along the only major road that leads to the interior of Sinai. The road, at this point today, is not paved. It is a gravel road that runs along the broad and most beautiful wadi in the whole of the Sinai — Wadi Feiran. In this wadi, about a week's travel time for the mass of Israelites from their previous encampment, is the modern oasis of Feiran. This could hardly be other than the ancient Dophkah of Numbers 33:12. It is

the largest oasis in all the Sinai. No Israelite complaints here!

Here, at Dophkah or the oasis of Feiran (33° 39' east longitude and 28° 43' north latitude), they encamped on the Sabbath the 22nd day of the second month. The previous day Moses had said: "This is that which the Lord hath said, Tomorrow is the rest of the holy Sabbath unto the Lord. . ." (Ex. 16:23). At Dophkah, on the 22nd, ". . . Moses said, Eat that to day, for to day is a Sabbath unto the Lord. . ." (verse 25).

Some disobeyed. They went out looking for manna that Sabbath morning and found none. God thundered, ". . . How long refuse ye to keep my commandments and my laws? . . . So the people rested on the seventh day" (verses 28 and 30).

From Dophkah the Israelites journeyed to Alush (Numbers 33:13), reaching it and encamping the last day of the month, the 29th, another weekly Sabbath. Alush is located 33° 57' east longitude and 28° 41' north latitude.

Along Wadi Feiran we, too, reached another oasis — the only other important one along the entire route of the wadi. It could hardly be other than the Alush of the Bible. From here it would have taken them about a day's journey to reach their next unexpected encampment — Rephidim, where there was "no water for the people to drink" (Num. 33:14). Rephidim, to this day, is recognized by the local bedouin as a broad area in Wadi Feiran adjoining the pass where the wadi turns south. (Up to this point one travels in the wadi in a general easterly direction.)

So angry had the people become from lack of water (summer was approaching) that they could have stoned Moses. "And the Lord said unto Moses, Go on before the people, and take with thee of the elders of Israel; and thy rod. . . . Behold, I will stand before thee there upon the *rock in Horeb*, and thou shalt smite the rock, and there shall come water out of it, that the people may drink. And Moses did so in the sight of the elders of Israel" (Ex. 17:5-6).

Finding the Rock

Notice that while the children of Israel were temporarily encamped in

Rephidim, the elders of Israel hurriedly accompanied Moses to Horeb. Horeb was near Rephidim.

Moses took off in a fast pace up the wadi southward to Horeb, where Mt. Sinai is located. And there, in the upper reaches of Wadi Feiran, which encircles Mt. Sinai, we saw what must be the rock Moses struck!

It is the only rock in all Sinai with twelve natural water stains indicating where water once supernaturally flowed out of the side of the rock!

It is not a natural outcrop of rock. It is a fallen angular boulder lying near the western foot of Mt. Sinai on the edge of the wadi. (Major Rothem and several bedouin children led us to it after we had climbed Mt. Sinai.)

It is one of the most remarkable evidences of divine miraculous power preserved anywhere in stone. The water could not have been from a natural spring, because this rock is not an outcrop through which springwater might naturally seep. It is one of many fallen boulders around Mt. Sinai, but the only one with water stains!

The waters pouring from the rock flowed along the western side of the mount, then northward to Rephidim where the thirsty Israelites were encamped.

The next day, apparently Monday, a battle broke out with a large detachment of Amalekite soldiers (Ex. 17:8) who must have come from the north through a wadi that joins Wadi Feiran near the pass. It was an all-day struggle. Moses, atop one of the ridges along the pass, held up his hands all day to heaven, imploring God to intervene on behalf of the rebellious Israelites. Theirs was the victory.

Next day Moses' father-in-law arrived, together with his daughter, Moses' wife, Zipporah. (There is a well named after her at the foot of the northern side of Mt. Sinai.) We read of this event in Exodus 18:12, "And it came to pass on the morrow," — apparently Tuesday — "that Moses sat to judge the people: and the people stood by Moses from the morning unto the evening." The place where Moses sat is traditionally a unique rock outcropping at the pass by Rephidim. It is the most unusual reddish natural rock anywhere

along the wadi. If we had had to choose a place to sit while listening to people's problems, this rock outcropping would have been our logical choice. It has the character of a high-backed chair in its contour.

When Jethro saw how long it took Moses to judge the people, he suggested others be appointed to help. That was done the very next day, Wednesday of that week. Jethro then left.

Encamped at Mt. Sinai

The next day, Thursday, the children of Israel reached the foot of Mt. Sinai.

Here is the Biblical account of this arrival, giving the exact day of the week. "In the third month (Sivan), when the children of Israel were gone forth out of the land of Egypt, *the same day* came they into the wilderness of Sinai" (Ex. 19:1).

The "same day" as what?

Why, the same day as they "were gone forth out of the land of Egypt"! They left Egypt on the fifth day of the week — what we call Wednesday night and Thursday today. They arrived at Mt. Sinai the same day of the week, Thursday. That Thursday, coincidentally, was not only the fifth day of the week, but also the fifth day of the third month, Sivan.

Near the foot of Sinai, in this valley of the encampment, is a small hill, not at all beautiful, atop which Aaron placed the golden calf. Nearby, along the edge of the wadi northwest of Mt. Sinai is a natural eroded basin in the rock. Locals claim it is where Moses stamped the golden calf to powder. "And he took the calf which they had made, and burnt it with fire, and ground it to powder, and strewed it upon the water [flowing from the rock farther up the wadi], and made the children of Israel drink of it" (Exodus 32:20, Jewish translation).

The next day after their arrival, Friday, Moses made two trips up Mt. Sinai (see Exodus 19:3, 7-9). It took us about an hour and a half on the long, modern eastern trail up the face of Sinai to reach the top. We took it at a leisurely pace. Moses probably climbed up and descended on the steeper northern face of Sinai — the ordinary route down from the top of Sinai taken by most

tourists who visit the mountain today.

The following day, Sabbath the 7th of Sivan, "... the Lord said to Moses, Go unto the people, and sanctify them to day and tomorrow, and let them wash their clothes, and be ready against the third day: for the third day the Lord will come down in the sight of all the people upon Mount Sinai" (verses 10, 11). That Sabbath Moses climbed Sinai once. Upon returning to the camp he sanctified the people — that is, set them apart, commanding them to remain clean and prepare themselves for a special day. The next day, Sunday, they washed their clothes and made everything ready. The third day, Monday, they gathered at the foot of Sinai and saw the cloud in which God descended, accompanied by terrible thunder and earthquakes and falling rocks.

That famous Monday was the first Pentecost! It commemorates the giving of the Law. Much later, on another Pentecost (Acts 2), the Holy Spirit of God came to imbue Jesus' disciples and enable them to keep the Law according to its spirit and intent!

The Valley of Assembly

While at Sinai we asked ourselves the question: In which valley or wadi at the foot of Sinai did the Israelites assemble to hear the giving of the Law? They were encamped to the north, but it would hardly be fitting for the people merely to stand at their tent flaps while the God of Heaven spoke to them in majesty! The only wadi in which they could have assembled away from their tents would have been at the eastern foot of Mt. Sinai. (The Wadi Feiran which extends along the west and southwest of the Mount is too small and, besides, was filled with running water from the rock.)

Is it significant that at the eastern foot of Sinai one had to face west, *not east*, to view the top of Sinai and God's presence? And later, when a temple was built in Jerusalem for God's presence, one also had to stand to the east, and face west, to view the front of the temple! The wadi to the east, at the foot of Sinai, where Israel assembled, is called by the native Arab bedouin the "Valley of Seven." (There is no natural characteristic of seven features in the

wadi. The native bedouin know nothing of the name.) Is it significant that one counts *seven weeks* and then comes the day of Pentecost, the day the Israelites stood in this valley to hear the Law? And is it significant that the only valley or wadi around Mt. Sinai from which one can view the uppermost peak of Sinai is from the east, not the north? (The highest point of the mount is on the southeast, not the north.)

Climbing to the Top of Sinai

Today one normally approaches the top of Sinai from the east by a route built and hewn out during the Turkish occupation of Sinai. This route gently moves up the talus-covered foot of the mountain in hairpin curves. Higher up, the trail rises steeply, until it cuts through the face of the eastern slope near the northeastern rim of the mount.

Rim? Yes, *rim!* For although Sinai is *not* volcanic, the mountain has a natural rim with a miniature high valley inside, near the top! There is no other mountain like it in all Sinai. One cannot see this miniature valley until one has reached the top of the rim and looks down into the heart of Sinai. There, a few hundred feet below are trees, a well, and an Orthodox chapel erected during the Byzantine period. This valley is reputedly the hiding place of Elijah to which the prophet fled in the days of Jezebel. It was here, according to local tradition, that God spoke to him.

And to this miniature valley ascended the seventy elders to eat in the presence of the Lord God of Israel (Exodus 24:1-2, 9-11). Moses and the elders came up the north side and descended into this miniature valley over the north rim. But Moses alone proceeded on that occasion to the very top. He would have had to walk up to the inner face of the eastern rim, join the trail on which we walked, and climb, barefoot because of the presence of God, along the inner face of the rim to the highest point.

The view from atop Sinai is spectacular. To the east, a large valley, then mountains. To the north, the entire stretch of the Sinai Peninsula lies open to view. To the southwest, another mountain — slightly higher than Sinai, but lacking its majesty.

Mount Sinai truly is magnificent! □

Readers Say...

(Continued from inside front cover)

me to receive this Bible Correspondence Course. This course helped me to get on the road to the right way of living—God's way. I am a baptized member of God's Church and I'll continue to use those Bible lessons, in addition to sermons and other helps for review, and as a base for continued study of the Bible. Also, I'll be praying the new, condensed 24 lessons of the Correspondence Course will help others to learn to lead happy, productive lives.

Mrs. Anita W.,
New York

Closer to Headquarters

Thank you very much for sending Mr. Antion to speak to us in the Sioux Falls Church. Everyone I talked to after the services felt that Mr. Antion brought us into clearer contact with this great Work of God, and made us more directly involved and inspired to back up future doors that open up. I was interested in and appreciated the comments about the Work in South America and Mr. Flores, as I have not heard any report previously. It isn't easy for him.

As a professional pilot, I am very happy that the college has been allowed to retain both the jet airplanes for the Work. It is much safer than commercial airlines. My family feels this is an answer to prayer, and we will continue to ask God to allow the jet aircraft for both the Armstrongs and other personnel at Headquarters. These airplanes are definitely not extravagant in view of the peace of mind their safety and efficiency provide in air travel.

W. L.,
Sioux Falls, South Dakota

Good Examples

My wife has been taking your Correspondence Course for nearly two years now. It has proved many things contrary to what I was taught. I found it very hard to believe and admit that I was very wrong. My wife has saved all her lessons from the beginning, probably hoping I would become interested in them, never saying too much, but always willing to answer any questions I had. She is a very understanding person. I now have started to work on them. I am only on lesson four, but they have renewed my interest in the Bible and taught me many things. Enclosed is my check. I have always given to my church, but somehow I have felt unhappy with it. Now I see they have not been preaching the true word of God as given in the Bible. I thank God very much for making me see my wrong ways and helping me get started in the right way—God's Way.

Charles Z.,
South Saint Paul, Minnesota

Congratulations

A friend of mine who is a subscriber to your magazine, showed me one of your co-worker letters. I was very interested to know partly how you did, and do, this fine work. For several years students, employees, etc., of your college have helped us usher in our Rose Parade grandstands across from your campus in Pasadena. I have been very favorably

impressed with these people each year and understand they donate their earnings to the college. Each year I hear more about your colleges and work, and would like to take this opportunity to congratulate your worldwide Christian operation.

Jack M.,
Sherman Oaks, California

Different People

I was very fortunate, since I am a Continental Trailways bus driver, to have taken a group from Chicago to the Lake of the Ozarks convention in October. I really enjoyed the services, but the only gripe I have—it didn't last long enough. I was there for eight days and time flew so fast. I met many interesting people while being there and found out that the people who attend these meetings and read your literature, living by the laws that you teach, are really a different kind of people.

Jim C.,
Steger, Illinois

Grateful for Assistance

I wish to take this time to thank the Church of God for making it possible for my children and me to go to the Feast of Tabernacles in the Ozarks last year. It truly was a blessing for us and we enjoyed every minute of it. Every day that goes by has a new discovery as to why obeying God's laws bring so much happiness words cannot describe. Without God's laws I do not know how I could ever raise three boys all by myself. Then we have all these blessings heaped on us. So again, thank you very much.

Mrs. Peggy B.,
Evansville, Indiana

I have just received your letter telling me you have approved my request for second tithe assistance, and I am very happy and just wanted to thank you. This will mean so much to me since I haven't been able to attend in four years. My children can hardly wait, and I am longing for the spiritual knowledge I will receive there since I don't get to attend services very often and I really need it. Also, my unconverted husband could hardly believe you were giving us something. He said no other church would do that. So again, thank you and all those who have made this 1970 Feast of Tabernacles possible for us.

Mrs. L. S.,
Pine Knot, Kentucky

Third Tithe Year Blessings

This is my last payment of my third tithe year and I wanted to write you to tell of one of my blessings. I was very apprehensive about my third tithe year. In fact, I couldn't see how it was possible to pay it. But after I set my mind to pay it, something very fantastic occurred. I received a \$1500 pay increase in the year. Not only that, but it has made it possible for me to get a tax refund of approximately \$500 which was the amount of third tithe I paid for the entire year! Truly you can't outgive God.

Kenneth T.,
Evansville, Indiana

I am very happy to enclose this amount along with our regular tithe and offering, for a wonderful blessing received during our third tithe year. We won a new car and sold it for \$1550! And this is our first third tithe year. God is providing for us in many ways.

Mr. & Mrs. Willard N.,
Walnut Ridge, Arkansas

Here is the final monthly third tithe for our first third tithe year. During these twelve months we have been extremely blessed, and a complete catalog of these blessings would fill up at least two pages. Suffice it to say that I made over \$2,000 more in the past year than I did the year before. We were able to eliminate two major bills we had for some time—one for a car and the other for an encyclopedia set. Our entire family was healthy during the whole year; we were able to make some new acquaintances which enriched our lives physically as well as other ways; we were able to meet twice with God's ministers this year—Mr. Antion and Mr. Menassas in St. John's, and Mr. Wilding and Mr. Roper here in Goose Bay. The list could go on, but I think you can see by the above that we have been very well blessed.

W. P.,
Goose Bay, Newfoundland

Friendliest, Kindest People

Saturday was my first time to attend Sabbath services in the Church of God in Kansas City, Kansas. It was a very enjoyable experience... I, and my sister also, met the friendliest, kindest people we have ever known. They are just filled with energy and enthusiasm for this wonderful Work. I feel truly privileged to have been invited to the services and am looking forward to each Sabbath with eager anticipation.

Janice C.,
Bedford, Iowa

Grateful Teen-ager

I am thirteen and a half years old and attend the Worldwide Church of God. I am very thankful that I have this privilege. My parents, three brothers and I started attending shortly after Thanksgiving of 1969. I know it is the true Church. It makes me long to have my friends in it so they can have true happiness and peace. This is a sickening world and I'm glad I'm not a part of it. However, sometimes the bright lights of it blind me and lead me astray. I am thankful I have such a good foundation as the Church to lean on for help.

Jenifer B.,
Mechanicsville, Virginia

Changed Girl

I have no idea who will read this, but I just wanted to let you know how grateful I am for what you have done for our daughter. She was home from your campus for a couple of weeks just recently, and though she has always been a very sweet girl (though a little headstrong), she seems to shine from within. She was much more understanding and tolerant. Being her mother, no one understands better than I her desire to be independent, to speak and act as she pleases. I thank God for her instructors and whoever was responsible for helping to keep her in line. She told me she had been baptized. I also thank God and you people for that.

J. B.,
California